



# St Luke's Park Primary PTFA Annual General Meeting (AGM)

Friday 27<sup>th</sup> September 2024

wifi: StLukes\_Guest  
P : guestofstlukes1234

# What is a PTFA? = Parent, Teachers and Friends Association

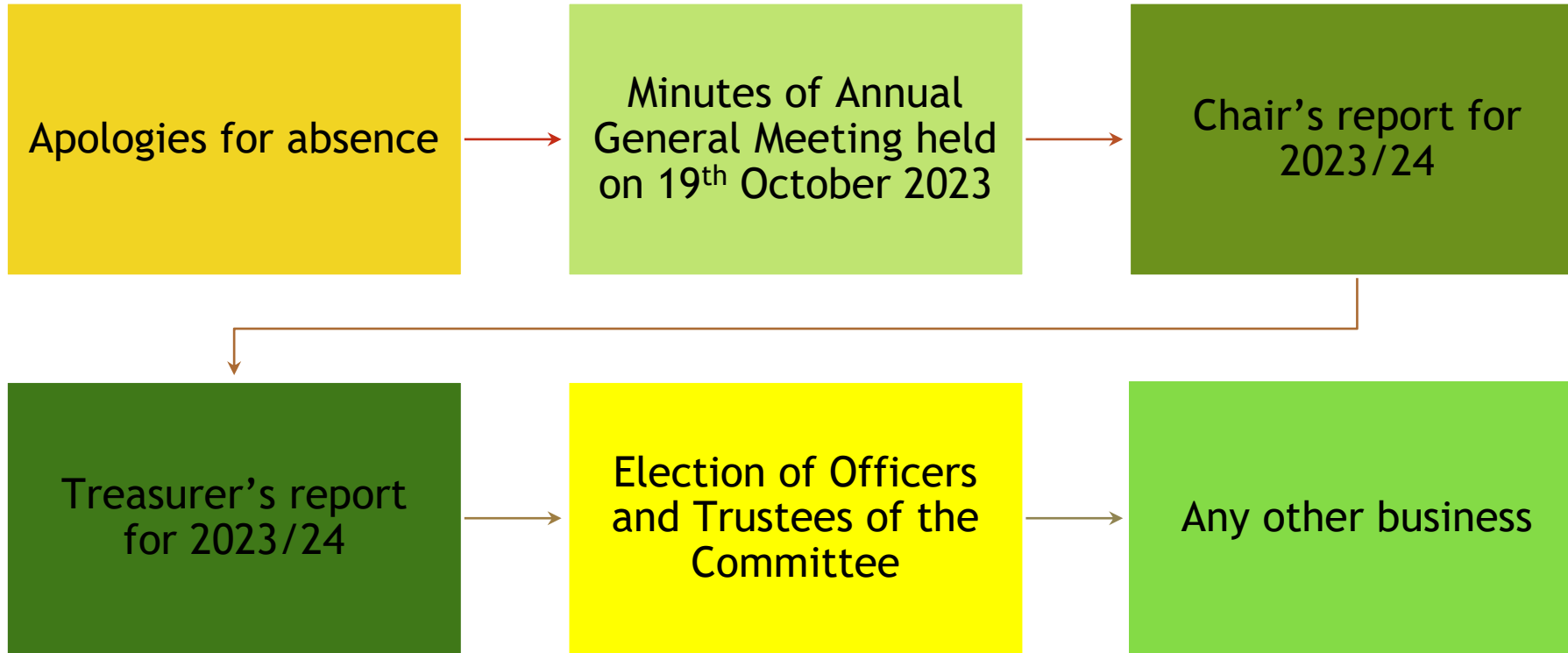
A group of volunteers who work together to make their school a better environment for children to learn.

Our association is about much more than simply fundraising. We aim to provide closer links between home and school and it's an excellent way to bring everyone in the school community together socially to support the school, working towards a common goal.

As a parent, carer, relative, or friend of a St Luke's Park Primary School student, YOU are automatically a member of our PTFA! We all have a role to play in supporting our school, and together we can create an active, inclusive community where our children can learn and thrive.

St Luke's Park Primary PTFA is working on becoming a registered charity.

# Agenda



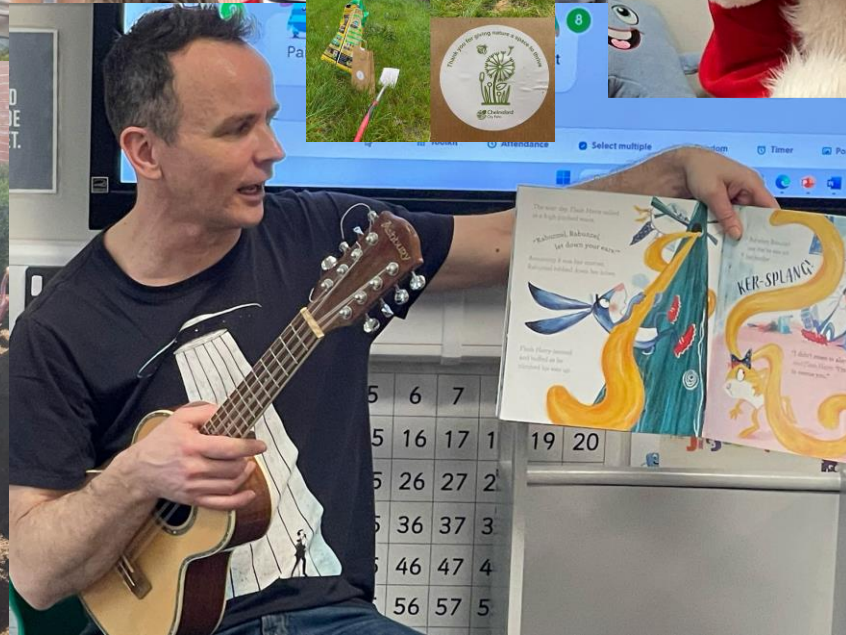
# Minutes of previous AGM 19.10.23

- Started from nothing with just 3 people the first year and gained more support for our second year.
- Ran successful events - Christmas disco, sponsored read, Easter egg hunt, coronation party, summer fair, and inflatable day.
- Built up stock such as glasses and decorations to reuse at events
- Elected committee members for 2023/24
  - Laura Hart, Sarah Kenuel, Nicole Haynes, Melanie Chatterton, Liz Bennet
- Ideas suggested for 2023/24

# Chair's report 2023/24

- Cauliflower Christmas cards
- Preloved Uniform
- Online store for uniform
- Preloved Christmas jumpers and costumes
- Switched to reusable plastic glasses
- Decorated the school for Christmas
- Christmas card distribution
- Christmas crafts
- Father Christmas visit
- Crab apple tree
- Christmas Disco
- Setup bank account
- Christmas Dinner gifts and help
- Create regular newsletters
- Handmade by Glenys
- Quiz evening
- Sensory garden
- Sponsored reading
- Author visit - Gareth P Jones
- Easter egg hunt
- Frozen Fridays
- Easy Fundraising
- Magic show
- Sunflower competition
- Leaflet re PTFA







27/09/2024

# Support from our community

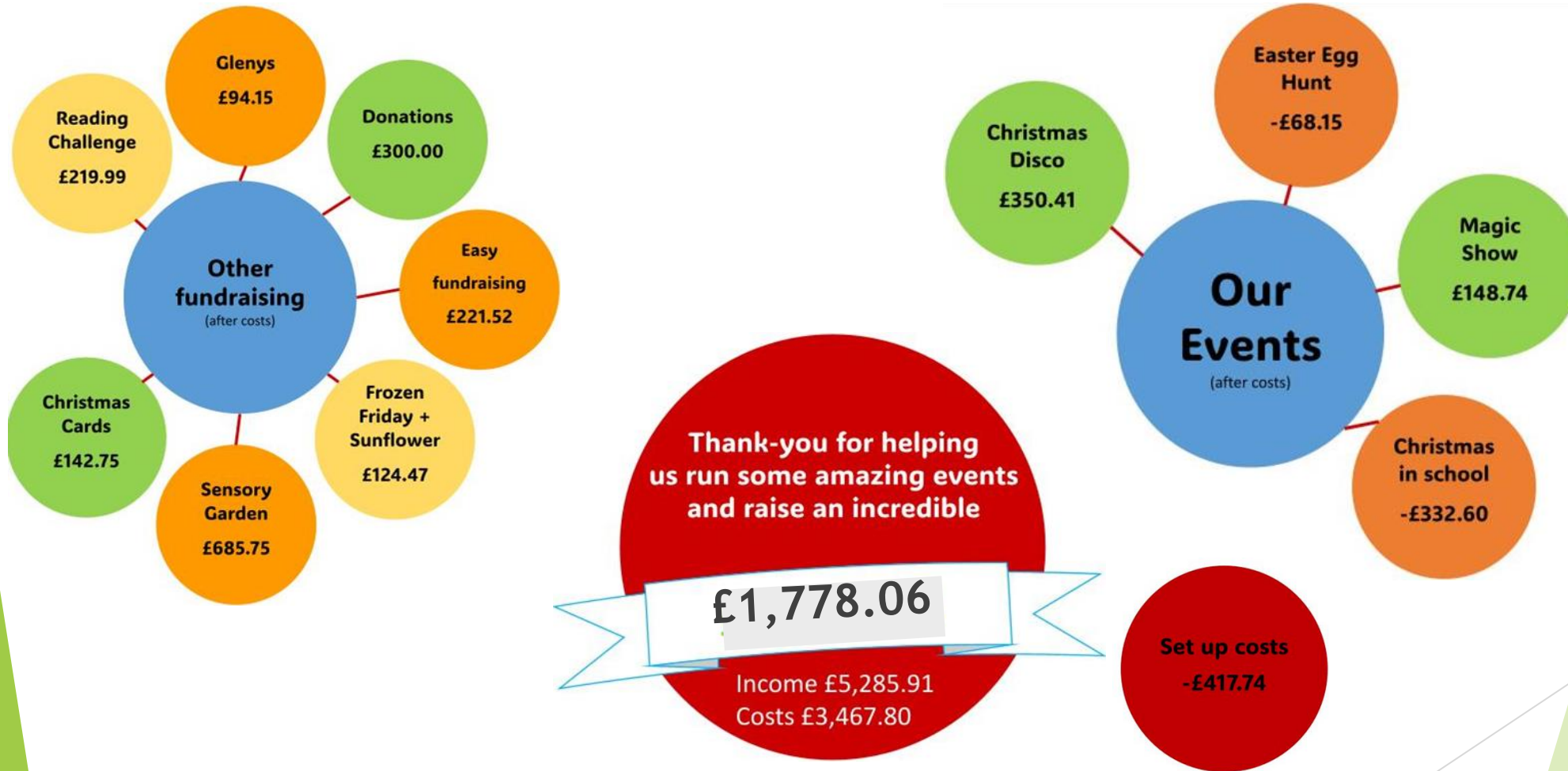


# THANK YOU!



St Luke's Park Primary PTFA - AGM

# Treasurer's report 2022/23





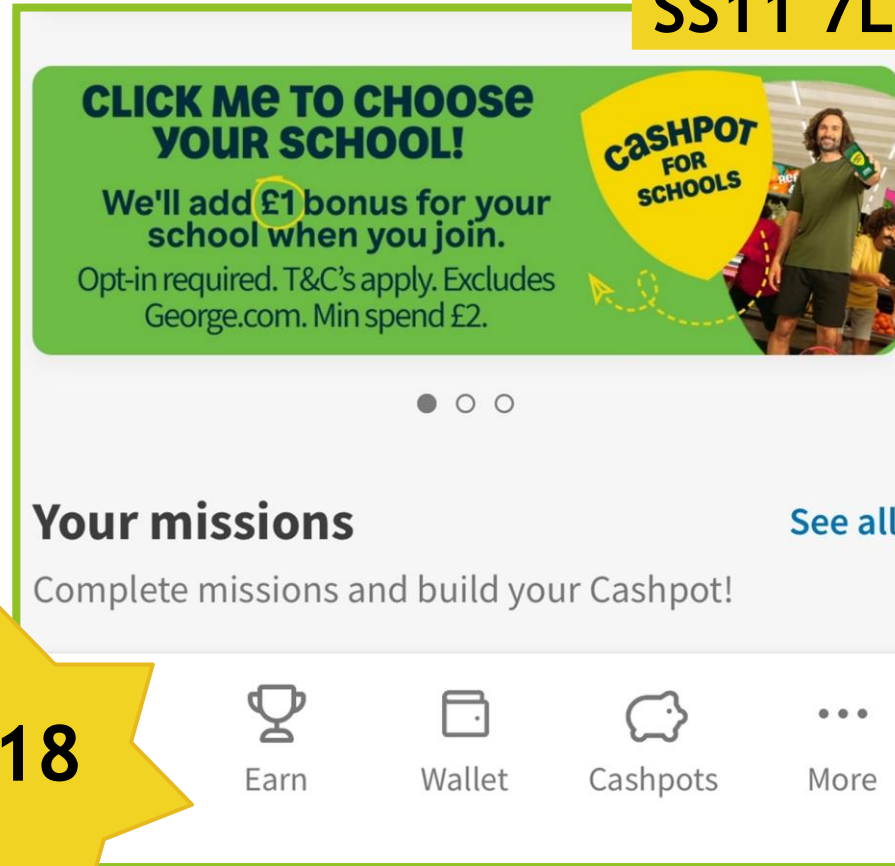
# ASDA Cashpot for schools

wifi: StLukes\_Guest  
P : guestofstlukes1234

SS11 7LH



£118



# Easyfundraising

wifi: StLukes\_Guest  
P : guestofstlukes1234

CAUSE PAGE QR CODE

St Luke's Park Primary PTFA - Essex



A QR code with a circular logo in the center. The logo features a stylized sunburst or starburst design in yellow and green.

**£654**

## Top Supporters

1	Elizabeth B. (you)	£163.57
2	Claudia B.	£104.36
3	Kayleigh R.	£76.88
4	Jon B.	£71.23
	Sarah K.	£58.88





# Election of official roles

Chair - Laura Hart



Secretary - Lucy Murphy



# Election of official roles

Treasurer - Tori Danskin



Partnerships - Mel Chatterton





# Election of official roles

Communications - Liz Bennet



# Election of official roles

Committee member – Maria Ewulomi



Committee member - Nicole Haynes





# Election of official roles

Committee member - Sophie Payn



Committee member - Claudia Baker



# Election of official roles

Committee member - Kayleigh Sweetman



Committee member - Nicola Tye





# Ideas for the future?

Breakfast and PJs, Halloween event, Recycling pumpkins, Psychic night, Race night, 2 Johns talk



[stlukesparkptfa@gmail.com](mailto:stlukesparkptfa@gmail.com)